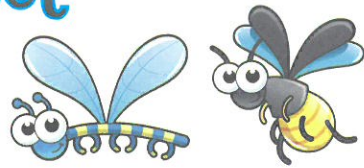


# What Makes an Insect an Insect?



**Note:** Before you begin to read the text, answer Questions 1 and 2 on the opposite page.

How are an ant, a bee and a fly all alike? That's right—they are all insects. But what makes them insects? For one thing, they all have six jointed legs. They also have three main body parts: a head, a thorax and an abdomen.

An insect's head has eyes, a mouth and two antennae. The antennae are used for smelling and tasting and can sense motion, heat and sound. The middle part of an insect's body is the thorax. If an insect has wings, this is where they are located. The hind part of an insect's body is usually the largest. It is the insect's abdomen.

Insects have skeletons that are on the *outside* of their bodies, and they are called exoskeletons. These skeletons are very hard, and they protect the soft inside part of the insect's body.

Insects are the most diverse group of animals on Earth; there are more than a million known insect species. They represent more than half of all known living creatures. Scientists think there may be millions more to discover.

The next time you see a bug, look at it closely. Is it an insect or not?



**Focus:** Asking and Answering Questions About a Text

Before you read a text, ask yourself, "What questions do I have about this topic? What do I hope to learn?" Then as you read, look for the answers.

- 1 Look at the title of the text. In the first column of the chart below, write something you already know about this topic.
- 2 In the second column of the chart, write something you want to know.

What I know	What I want to know	Answer

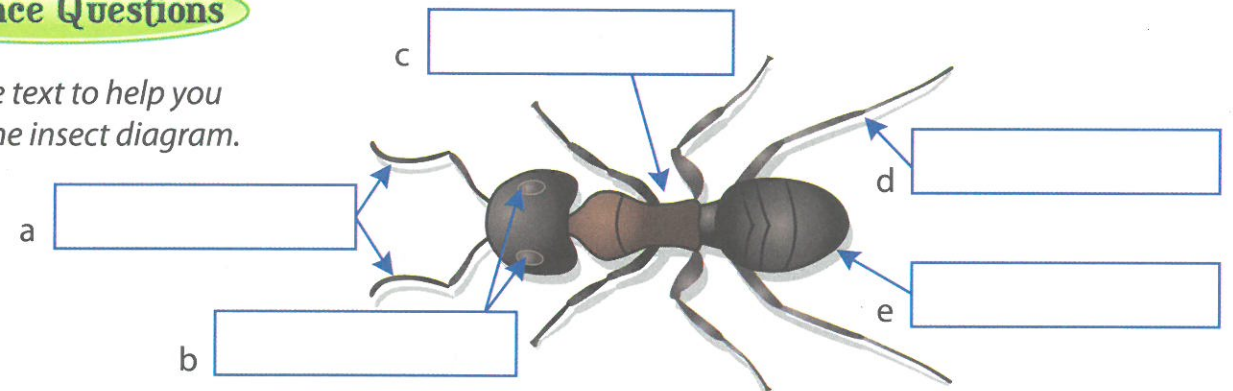
- 3 Read the text. Write the answer to your question in the third column.

**Literal Questions**

- 4 What are the three main body parts of an insect?  
\_\_\_\_\_
- 5 Name two insects mentioned in the text. \_\_\_\_\_
- 6 Where are insects' skeletons? \_\_\_\_\_
- 7 What is an insect's skeleton called? \_\_\_\_\_
- 8 What are the antennae used for? \_\_\_\_\_

**Inference Questions**

- 9 Use the text to help you label the insect diagram.



- 10 Do all insects have wings? How do you know?  
\_\_\_\_\_  
\_\_\_\_\_
- 11 Now that you know more about insects, is a spider an insect? Why?  
\_\_\_\_\_  
\_\_\_\_\_